

DISPATCH RECAP SHEET

DATE: 11-10-22

DAY THUR

SHIFT: DAY

NIGHT

MCA: 41 / 60

MCA FOR 11-11-22

51/70

30% BOARD

CLEARED BOARD

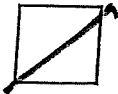


LAST JOB LEFT OFF ON _____ HOURS

30%
10

KEY BOARD

CLEARED BOARD



LAST JOB LEFT OFF ON _____ HOURS

BASIC BOARD

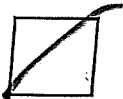
CLEARED BOARD



LAST JOB LEFT OFF ON _____ HOURS

TEADY BOARD

CLEARED BOARD



LAST JOB LEFT OFF ON _____ HOURS

BS REMAINING AFTER DISPATCH= 63

Local 63 Dispatch for 10-Nov-2022 Night

SC Average Hours = 40 Key Average Hours = 64

SEQ	Reg#	Name	Shift	Board	Hours	Job#	Availability
1	40754	MIDDLETON,DORIS	2	2 SC	21	101	
2	36963	MALONE,MARVADELL	2	2 SC	34	105	
3	37503	CURRY,LESLIE	2	2 SC	35	VAC	
4	9374	DE JESUS,JESSE	2	2 SC	51	FLOP	
5	37122	RODRIGUEZ,IRENE	2	2 SC	60	103	
1	36963	MALONE,MARVADELL	2	3 Key	0	S/C	
2	40754	MIDDLETON,DORIS	2	3 Key	0	S/C	
3	37122	RODRIGUEZ,IRENE	2	3 Key	0	S/C	
4	35503	COMPARI,VINCENT	2	3 Key	20	THURS	
5	130070	KAMEL,LEONARDO	2	3 Key	20	104	
6	37503	CURRY,LESLIE	2	3 Key	20	VAC	
7	38420	LAWRENCE,SHANNON	2	3 Key	36	FLOP	
8	131142	NEDROW,MARIA	2	3 Key	40	102	
9	37047	ATCHLEY,LEE	2	3 Key	40	FLOP	
10	38698	ARIAN-EDWARDS,JUSTINE	2	3 Key	40	FLOP	
11	38191	FAMILATHE,CATHERINE	2	3 Key	40	FLOP	
12	40952	VITALICH,TODD	2	3 Key	43	FLOP	
13	38507	GARRETSON,GREGORY	2	3 Key	43	234	
14	39274	BUCHANAN,JOSEPH	2	3 Key	44	409	
15	35512	QUICK,RON	2	3 Key	50	VAC	
16	37603	KING,NANCY	2	3 Key	50	FLOP	
17	39251	CHAVEZ-WILDER, GLORIA	2	3 Key	50	FLOP	
18	37538	VAN PATTEN,MICHELLE	2	3 Key	50	FLOP	
19	38668	CRUZ,DIANA	2	3 Key	50	VAC	
20	9374	DE JESUS,JESSE	2	3 Key	50	FLOP	
21	130083	BOETTGER,MIKE	2	3 Key	52	408	
22	131873	SESTICH,CHRIS	2	3 Key	54	407	
23	35232	TALIERCIO,FRANK	2	3 Key	58	FLOP	
24	40956	FONTES,ASHLEY	2	3 Key	60	FLOP	
25	37584	LUNA,BECKY	2	3 Key	60	THURS	
26	39269	QUINTANA,ISELA	2	3 Key	60	T/F/S	
27	36863	ALLEN,JAMES	2	3 Key	60	THURS	
28	131247	PARKER,HUEY	2	3 Key	60	255	
29	37620	ARMIJO,SUZETTE	2	3 Key	62	FLOP	
30	40946	LUCIN,ANDY	2	3 Key	65	FLOP	
31	37449	KANLILAR,MARIA JULIA	2	3 Key	65	FLOP	
32	38041	CLARK,CRESHINDA	2	3 Key	65	233	
33	38549	LEE,PETER	2	3 Key	66	FLOP	
34	131236	KRISTIANSEN, TOR	2	3 Key	66	249	
35	36582	BLAKE,MARLENA	2	3 Key	66	FLOP	
36	35608	MATTOX,GARY	2	3 Key	68	FLOP	
37	37514	LUFALEMANA,LORRAINE	2	3 Key	70	547	
38	37747	BRADLEY, JR.,ALVIN	2	3 Key	70	THURS	
39	38457	HILL,MARK	2	3 Key	71	225	
40	130892	MENDEZ, EDGAR	2	3 Key	71	406	
41	37823	MITCHELL,JANNIE	2	3 Key	77	233	
42	36416	REED,CAROLYN	2	3 Key	80	FLOP	
43	38203	MCKENNA,DENISE	2	3 Key	81	THURS	
44	37293	RAMOS,ARMANDO	2	3 Key	83	403	
45	38443	D'AQUANNO,BENEDICT	2	3 Key	83	233	

46	36152	CHACON,ANDREW	2	3 Key	91	THURS	
47	38921	LUAFALEMANA,ANTONIO	2	3 Key	91	402	
48	39070	STAAL,ROBERT	2	3 Key	91	411	
49	37031	ALBA,LORRAINE	2	3 Key	92	410	
50	38915	LAGARDE,MARVIN	2	3 Key	96	231	
51	36679	FIAMENGO,FRANC	2	3 Key	99	247	
52	38875	VOJKOVICH,MICHAEL	2	3 Key	110	FLOP	
53	37315	KEAWE,JO ANN	2	3 Key	127	254	
54	35847	CRACCHIOLO,JOHN	2	3 Key	140	547	
55	37540	PONCE,ROSALIE	2	3 Key	142	231	
56	37408	HODGE,LINDA	2	3 Key	148	253	
1	130837	MICKLO-PEREZ, DOROTHY	2	4 Basic	54	404	
2	39412	MORHAR,SUZANA	2	4 Basic	75	411	
3	39666	AGUILERA, SAL	2	4 Basic	90	401	
4	39748	STARR, BELINDA	2	4 Basic	93	410	
5	39792	WALKER, MICHAEL	2	4 Basic	97	FLOP	
6	39467	ENRIQUEZ, JESUS	2	4 Basic	98	229	
7	39125	RUIZ,ANTONIO	2	4 Basic	101	542	
8	39615	RUDEEN, JOHN	2	4 Basic	104	229	
9	39577	LAUDENBERG, PIERRE	2	4 Basic	111	213	
1	40781	BOBADILLA,SYLVA	2	6 SC STDY	91	O/D	
1	131649	FENDER,DEANNE	2	7 Key STDY	82	O/D	
2	39970	PENA,JUAN	2	7 Key STDY	95	249	
3	39385	LOPEZ,STEVEN	2	7 Key STDY	98	FLOP	
4	39639	MALIN,DEVLON	2	7 Key STDY	99	O/D	
5	40781	BOBADILLA,SYLVA	2	7 Key STDY	101	O/D	
6	132980	FINAZZO,SALVATORE	2	7 Key STDY	104	401	